



Creation 70

The Reference in LVT

Gerflor[®]

Creation 70



Creation 70 Clic

Clipsable /
Interlocking

DUO CORE Rigid
& Comfort



Clic Revolution Fast
& Easy



Pensez aux sous couches Gerflor Acoustic 15dB /
Acoustic Plus 19dB
Think about Gerflor underlayers: Acoustic 15 dB /
Acoustic Plus 19dB



Creation 70

Collage permanent /
Glue down



Principe de Mise en œuvre sur gerflor.fr / Installation guidelines on gerflor.com



PORTOBELLO



TERRAZZO OCRE

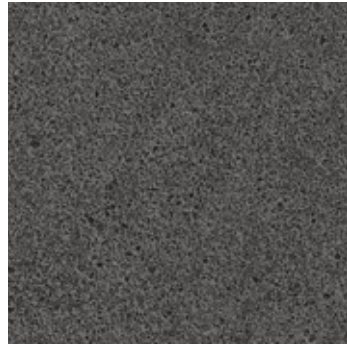
30 ans d'expérience - Depuis 1985
Fabricant - 3 Sites de Production
Excellence opérationnelle - 12 Plateformes Logistiques
Direction artistique intégrée - Décors Exclusifs

30 years experience - Since 1985
Manufacturer - 3 LVT Factories
World Class Logistics - 12 Logistics Hubs
Gerflor Design Centre - Exclusive Designs

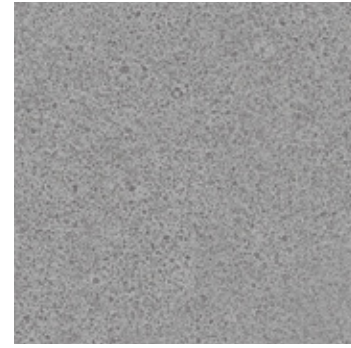
Coloris	Code	Creation 70 A collar / Glue down	Creation 70 Clic	Plinthes décor (Pvc) Coloris coordonnés Skirtings (Matching Designs)
Dock Grey	0085	■	■	S111
Dock Taupe	0087	■	■	S020
Gentleman Grey	1058	■	■	White
Midwest	0538	■	■	S039
Moon Island	0358	■	■	S034
Onka Honey	1054	■	■	S121
Portobello	0357	■	■	S053
Pure Concrete Dark	1062	■	■	White
Pure Concrete Light	1060	■	■	White
Pure Concrete Medium	1061	■	■	White
Albion	0577	■	■	S108
Cervino Oak Beige	0797	■	■	S011
Cervino Oak Nature	0798	■	■	S109
Deep Forest	0360	■	■	S110
Etna Beige	1068	■	■	White
Etna Dark	1069	■	■	White
Grace Bay Black	1050	■	■	White
Muse Sand	1052	■	■	S117
Muse Smoked	1051	■	■	S118
Onka Coffee	1057	■	■	White
Onka Natural	1055	■	■	S122
Onka Pearl	1056	■	■	S120
Oxyd Iron	0089	■	■	White
Oxyd Pure	0088	■	■	White
Pure Concrete Beige	1063	■	■	White
Prado Green	1064	■	■	White
Prado Terracotta	1065	■	■	White
Secret Garden White	1059	■	■	White
Serena	0545	■	■	S132
Terrazzo Nature	1067	■	■	White
Terrazzo Ocre	1066	■	■	White
Toasted Wood Ash	1053	■	■	White
Toasted Wood Cafe	0799	■	■	White
Toasted Wood Roadster	0800	■	■	White
Wild Oak	0359	■	■	S075
Denim Wood	0356	■	■	S026
Diesel Burnt	1074	■	■	White
Diesel Nala	1075	■	■	White
Gentleman Garance	1080	■	■	White
Gentleman Indigo	1081	■	■	White
Gentleman Peppermint	1082	■	■	White
Gentleman Taupe	1083	■	■	White
Gentleman Tweed	1076	■	■	White
Tatami Raffia	1078	■	■	White
Tatami Savane	1077	■	■	White
Tatami Smoked	1079	■	■	White
Carassi	0561	■	■	White
Cervino Oak Cold Grey	1187	■	■	White
Cervino Oak Honey Clear	1186	■	■	White
Clifton	0556	■	■	S144
Clifton Chesnut	1191	■	■	White
Clifton Grey	1192	■	■	White
Clifton Honey	1190	■	■	White
Douglas	0535	■	■	White
East Village	0522	■	■	S154
Grace Bay Cream	1049	■	■	White
Halifax	0531	■	■	S032
Limed Oak	0329	■	■	S147
Regimental Picadilly	0807	■	■	White
Silversands	0324	■	■	S146
Solid Glam Picadilly	0803	■	■	White
Travertino Beige	1188	■	■	White
Travertino Grey	1189	■	■	White

■ : Disponible / Available
Informations, LRV/NCS sur gerflor.fr / More details, LRV/NCS on gerflor.com

Blanc / White: S001



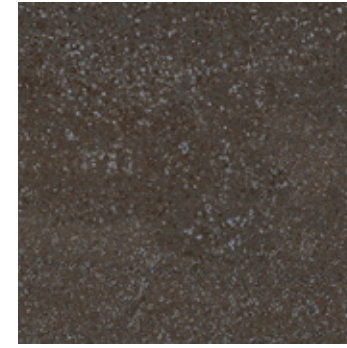
Pure Concrete Dark 1062
914 × 914 | 391 × 729



Pure Concrete Medium 1061
914 × 914 | 391 × 729



Pure Concrete Light 1060
914 × 914 | 391 × 729



Oxyd Iron 0089
457 × 914 | 391 × 729



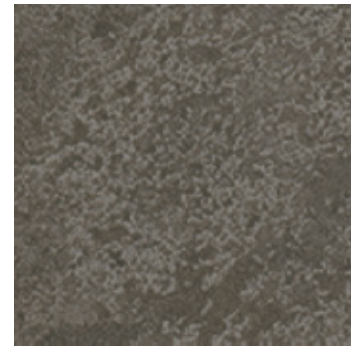
Etna Dark 1069
457 × 914 | 391 × 729



Pure Concrete Beige 1063
914 × 914 | 391 × 729



East Village 0522
610 × 610



Halifax 0531
610 × 610



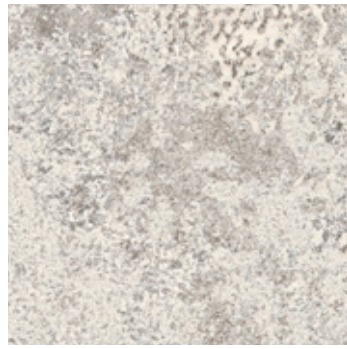
Etna Beige 1068
457 × 914
MIX: 152 × 914 / 305 × 914 /
457 × 914 (on demand) | 391 × 729



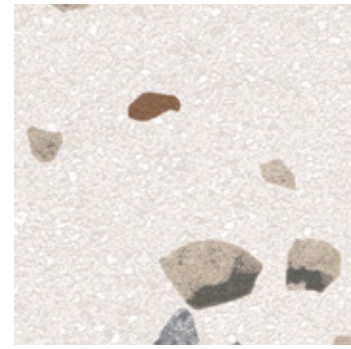
Travertino Grey 1189
228 × 914



Travertino Beige 1188
228 × 914



Secret Garden White 1059
457 × 914 | 391 × 729



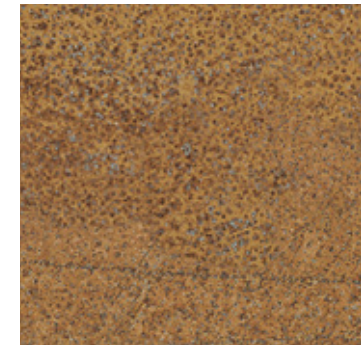
Terrazzo Nature 1067
914 × 914



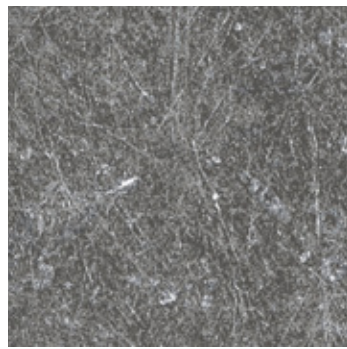
Terrazzo Ocre 1066
914 × 914



Prado Terracotta / Prado Green



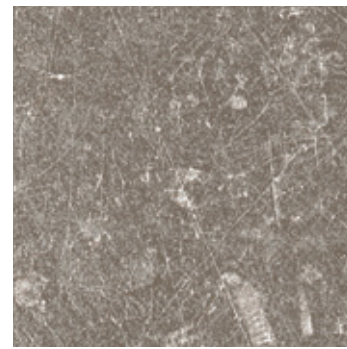
Oxyd Pure 0088
457 × 914 | 391 × 729



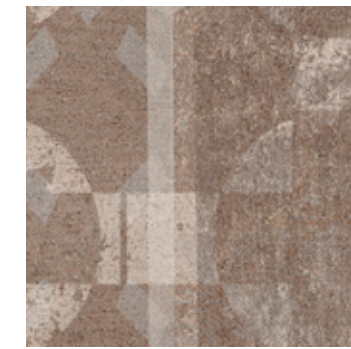
Dock Grey 0085
457 × 914 | 391 × 729



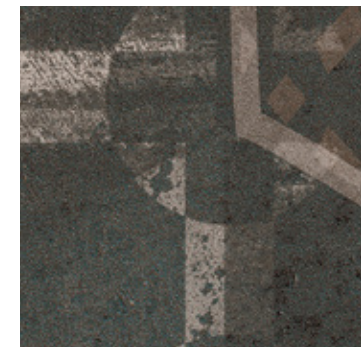
Pure Concrete Light / Dock Grey



Dock Taupe 0087
457 × 914 | 391 × 729

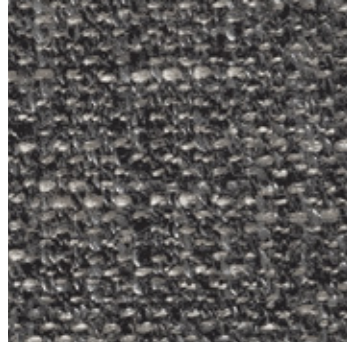


Prado Terracotta 1065
457 × 914 | 391 × 729



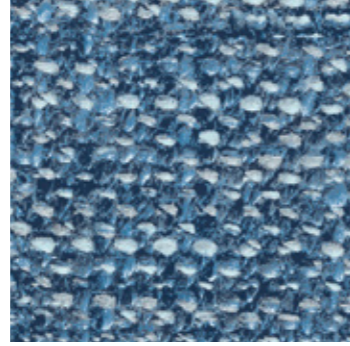
Prado Green 1064
457 × 914 | 391 × 729

NIVEAU DE CONTRASTE DU DÉCOR /
DESIGN SHADE VARIATION: Léger /
Light Moyen /
Medium Fort /
High



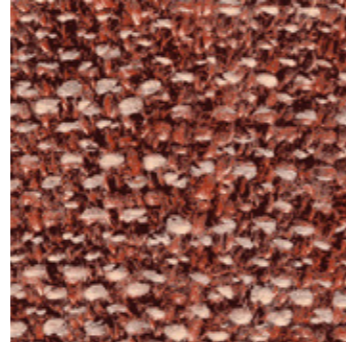
Gentleman Grey 1058

610 × 610 | 391 × 729



Gentleman Indigo 1081

610 × 610



Gentleman Garance 1080

610 × 610

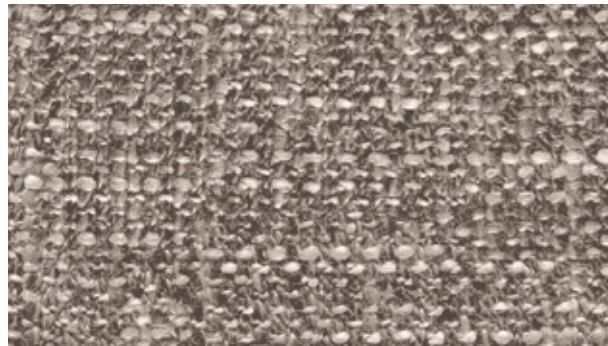


Deep Forest 0360

208 × 1243 | 214 × 1239

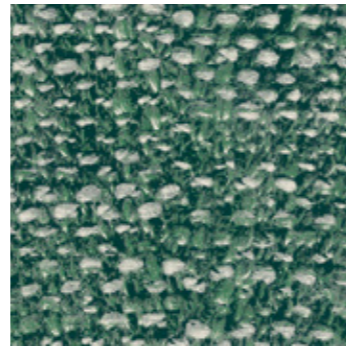


Diesel Nala



Gentleman Taupe 1083

228 × 914



Gentleman Peppermint 1082

610 × 610



Diesel Burnt 1074

230 × 1500



Diesel Nala 1075

230 × 1500



Gentleman Tweed 1076

228 × 914



Gentleman Grey / Gentleman Peppermint / Gentleman Garance



Toasted Wood Cafe 0799

230 × 1500 | 242 × 1461



Toasted Wood Roadster 0800

230 × 1500 | 242 × 1461



Tatami Smoked 1079

610 × 610



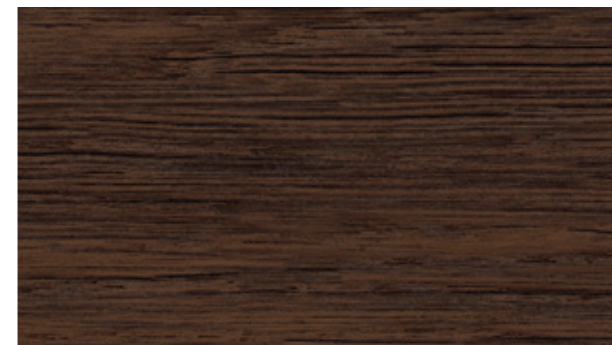
Tatami Raffia 1078

610 × 610



Tatami Savane 1077

610 × 610



Onka Coffee 1057

230 × 1500 | 242 × 1461



Wild Oak 0359

208 × 1243 | 214 × 1239

NIVEAU DE CONTRASTE DU DÉCOR /
DESIGN SHADE VARIATION:





Grace Bay Cream 1049

208 × 1243



Portobello 0357

208 × 1243 | 214 × 1239



Denim Wood 0356

208 × 1243



Clifton Grey 1192

208 × 1243

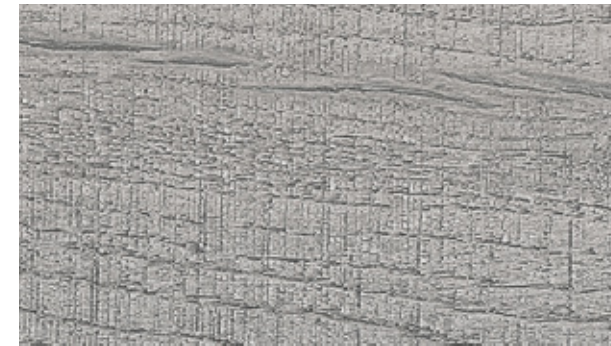


Solid Glam Picadilly / Regimental Picadilly



Moon Island 0358

208 × 1243 | 214 × 1239



Cervino Oak Cold Grey 1187

230 × 1500



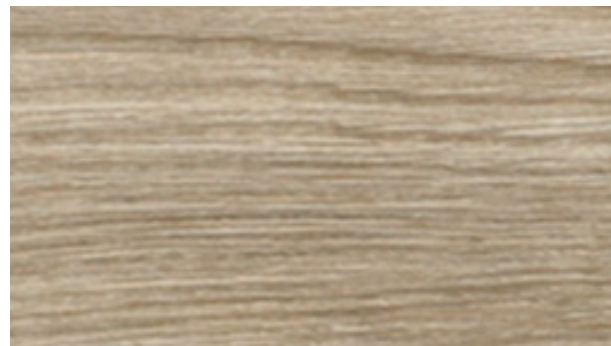
Muse Smoked 1051

208 × 1243 | 214 × 1239



Regimental Picadilly 0807

184 × 1219



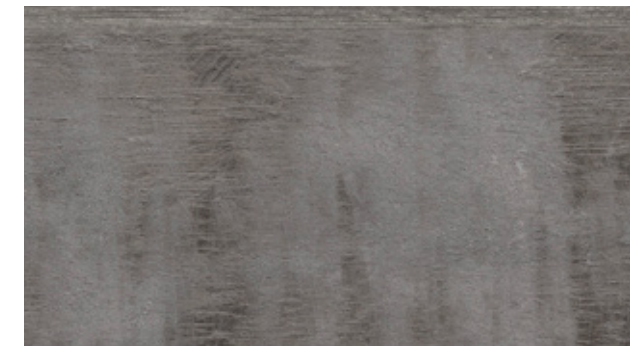
Douglas 0535

208 × 1243



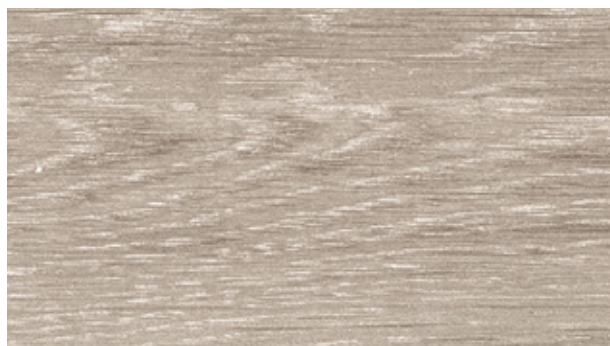
Onka Pearl 1056

230 × 1500 | 242 × 1461



Toasted Wood Ash 1053

230 × 1500 | 242 × 1461



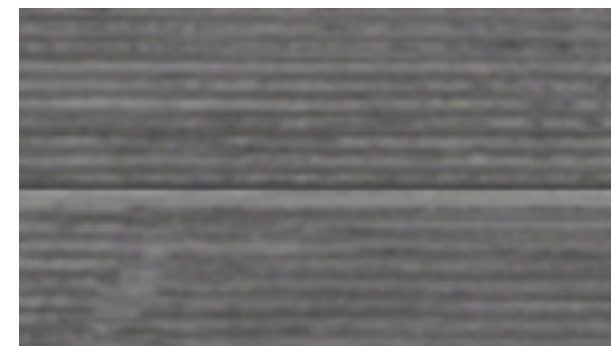
Solid Glam Picadilly 0803

184 × 1219



Clifton 0556

Mix: 152 × 914 / 76 × 914 / 228 × 914



Carassi 0561

228 × 914



Grace Bay Black 1050

208 × 1243 | 214 × 1239

NIVEAU DE CONTRASTE DU DÉCOR /
DESIGN SHADE VARIATION:



NIVEAU DE CONTRASTE DU DÉCOR /
DESIGN SHADE VARIATION:





Midwest



Midwest 0538

208 × 1243 | 214 × 1239



Onka Natural



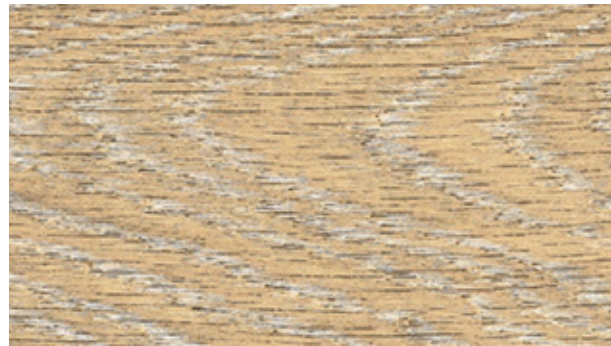
Onka Natural 1055

230 × 1500 | 242 × 1461



Limed Oak 0329

208 × 1243



Silversands 0324

208 × 1243



Clifton Honey 1190

208 × 1243



Onka Honey 1054

230 × 1500 | 242 × 1461



Cervino Oak Beige 0797

230 × 1500 | 242 × 1461



Cervino Oak Nature 0798

230 × 1500 | 242 × 1461



Albion 0577

208 × 1243 | 214 × 1239



Serena 0545

208 × 1243 | 214 × 1239



Muse Sand 1052

208 × 1243 | 214 × 1239



Cervino Oak Honey Clear 1186

230 × 1500



Clifton Chestnut 1191

Mix: 152 × 914 / 76 × 914 / 228 × 914









Clifton Chestnut

NIVEAU DE CONTRASTE DU DÉCOR / DESIGN SHADE VARIATION:  Léger / Light  Moyen / Medium  Fort / High



* information sur le niveau d'émission de substances volatiles dans l'air intérieur, présentant un risque de toxicité par inhalation, sur une échelle de classe allant de A+ (très faibles émissions) à C (fortes émissions).

		Creation 70							Creation 70 Clic			
		Creation 70 Design							Creation 70			
Description / Description / Beschreibung / Beschrijving / Descrição / Descrizione												
Épaisseur totale / Total Thickness / Gesamtdicke / Totale dikte / Espesor total / Spessore totale	EN ISO 24346	mm	2.50							2.50	6.00	
	ASTM F386-02	inch	0.1							0.1	0.24	
Épaisseur couche d'usure / Thickness of the wearlayer / Dicke der Nutzschrift / Dikte van de slijtlaag / Espesor capa de uso / Spessura camada de desgaste / Spessore strato di usura	EN ISO 24340	mm	0.70							0.70	0.70	
	ASTM F410-02	inch	0.03							0.03	0.03	
Poids / Weight / Flächengewicht / Gewicht / Peso / Peso / Peso	EN ISO 23997	g/m ²	4100							3960	9850	
	ISO 24342	mm	184,15 x 1219,2	230,0 x 1500,0	Mix planks 76,2 / 152,4 / 228,6 x 914,4	609,6 x 609,6	914,4 x 914,4	457,2 x 914,4	228,6 x 914,4	Mix tiles 152,4 / 304,8 / 457,2 x 914,4	208,0 x 1243,0	214 x 1239 / 242 x 1461 / 391 x 729
Format / Size / Format / Afmetingen / Dimensiones / Dimensões / Dimensioe	ASTM F 536	inch	7.25"x48"	9"x59"	3"67/9" x36"	24"x24"	36"x36"	18"x36"	9"x36"	6"12/18" x36"	8.2"x48.9"	8.4" x 48.7" / 9.5" x 57.5" / 15.3" x 28.7"
Number of planks/tiles per box / Nombre de lames/dalles par boîte	-	-	14 ⁽¹⁾ / 15	9	8+8+8	9	5	9	17	4+4+4	14	6 / 5 / 5
Classification / Klassifikation / Classificatie / Classification / Clasificaciones / Classificações / Classificazioni												
Norme/Spécification produit / Norm/Product Specification / Produktnorm / Technische eigenschappen / Normas / Normas / Norma prodotto	-	-	EN ISO 10582							EN ISO 10582		
	ASTM F 1700-04	-	Class III Type B							Class III Type B		
Classement européen / European Classification / Europäische Klassifizierung / Europese classificatie / Clasificación europea / Classificação Europeia / Europea	EN ISO 10874	Class	34 - 43							34 - 43		
Classement UPEC	-	-	U4P3E2C2							U4P3E2C2	U4P3E1/2C2	
Certification 	QB 30	n°	783/356-001.1							302-001-1	-	
Avis Technique	-	n° AT.	-							-	12/20-1795_V1	
Classement Feu / Fire Rating / Brandverhalten / Brand classificatie / Fuego / Fogo / Reazione al fuoco	EN 13 501-1	Class	Bfl-s1							Bfl-s1		
Potentiel de charge / Static Electrical Propensity / Begehaufadung / Elektrische eigenschappen / Comportamiento electrostático / Comportamento electrostático / Resistenza elettrica	EN 1815	kV	< 2							< 2		
Glissance humide / Slip Resistance Wet / Rutschhemmung / Anti-slip / Deslizamiento húmedo / Escorregamento húmido / Scivolosità umida ⁽²⁾	EN 16165:2021 Appendix B (DIN 51130)	Class	R10							R10		
Performance / Performances / Technische Eigenschaften / Testresultaat / Cualidades Técnicas / Performances / Caratteristiche Tecniche												
Résistance à l'usure / Wear Resistance / Verschleißverhalten / Slijtvastheid / Abrasión / Abrasão / Resistenza all'abrasione	EN 660.2	mm ³	< 2.0							≤ 2.0		
Groupe d'abrasion / Wear Group / Verschleißgruppe / Groep slijtvastheid / Grupo de abrasión / Grupo de abrasão / Gruppo di abrasione	QB 30	group	T							T		
Teneur en agent liant / Type Binder content / Bindemittelgehalt / Contenido en ligante / Conteúdo em ligante	ISO 10582	group	I							I		
Stabilité dimensionnelle (norme) / Dimensional stability (norm) / Maßstabilität (norm) / Maatvastheid (norm) / Estabilidad Dimensional (Exigencia) / Estabilidade dimensional (normalização) / Stabilità dimensionale (requisito normativo)	EN ISO 23999	%	≤ 0.25							≤ 0.15		
Stabilité dimensionnelle (valeur moyenne mesurée) / Dimensional stability (average measured value) / Maßstabilität (Durchschnittswert) / Maatvastheid (gemeten gemiddelde waarde) / Estabilidad Dimensional (Valor medido) / Estabilidade Dimensional (Valor medio) / Stabilità dimensionale (rilevata)	-	%	≤ 0.10							≤ 0.05		
Poinçonnement statique rémanent / Residual Indentation / Resteindruck / Indrukbelasting / Punzonamiento / Punctoamento / Impronta	EN ISO 24343-1	mm	≤ 0.10							≤ 0.10		
Isolation acoustique bruits de chocs / Impact sound insulation / Trittschallverbesserungsmaß / Geluidsisolatie / Acústica / Isolamento acústico	EN ISO 717-2	dB	4							4		
Sonorité à la marche / Room Impact / Raumschall / Loopgeluid / Rumore al calpestio / Sonoridad en la pisada / Sonoridade ao andar	NF S 31074	dB	76							78		
Essai de la chaise à roulettes / Castor chair test / Stuhlrollenbeanspruchung / Rolweerstand bureaustoelen / Determinación del efecto de una silla con ruedas / Resistencia a cadeiras de rodas / Resistenza al passaggio di sed (Type W)	ISO 4918	-	OK							OK		
Conductivité thermique / Thermal Conductivity / Wärmeleitfähigkeit / Thermische weerstand / Conductividad térmica / Contutividade térmica / Resistenza termica / Wärmeleitfähigkeit / Varmemestand	EN ISO 10456	W/(m.K)	0.25							0.25		
Solidité lumière / Colour Fastness / Lichtechtheit / Lichtechtheid / Resistencia a la luz / Estabilidade das cores / Solidità alla luce	EN 20 105 - B02	degree	≥ 6							≥ 6		
Traitement de surface / Surface Treatment / Oberflächenvergütung / Oppervlaktebehandeling / Tratamiento de superficie / Tratamento de superficie	-	-	PUR+ Matt							PUR+ Matt		
Résistance aux produits chimiques / Chemical Products Resistance / Verhalten gegenüber Chemikalien / Chemische bestendigheid / Resistencia a los productos químicos / Resistência aos produtos químicos / Resistenza ai prodotti chimici ⁽³⁾	EN ISO 26987	-	OK							OK		
Environnement/Qualité de l'air Intérieur / Environment/Indoor air quality / Umwelt/Raumluftqualität / Medio ambiente/Calidad interior del aire interior / Meio ambiente/Qualidade do ar interior												
TVOC après 28 jours / TVOC after 28 days / TVOC (28 Tage) / TVOC (28 dagen) / TVOC (28 días) / TVOC (28 dias) / TVOC (28 giorni) / TVOC (28 dagar) / TVOC (28 dager)	ISO 16000-6	micrograms/m ³	< 10							< 10		
Certification / Certification / Zeugnis / Certificado / Certificação	-	-	Floorscore [®]							Floorscore [®]		
Marquage CE / CE Marking / CE Kennzeichnung / Eg_conformiteitsmerk / Marca De Conformidad CE / Marca De Conformidade CE / Marcatura CE Di Conformita												
	EN 14041	-	   									

(1) Regimental Picadilly 0807

(2) Plan incliné avec huile / Ramp test with oil / Schiefe Ebene

(3) Beständig gegenüber nicht färbenden alkoholhaltigen Handdesinfektionsmitteln, Haushaltschemikalien und verdünnten Säuren und Laugen bei kurzzeitiger Einwirkung.

IMPORTANT : Les informations contenues dans ce document sont valables à compter du 01/05/2024 et susceptibles d'être modifiées à tout moment et sans préavis. L'évolution de la technique étant permanente, il appartient à notre clientèle avant toute mise en œuvre, de vérifier auprès de nos services que le présent document est bien celui en vigueur.

IMPORTANT: The information contained in this document is valid from 01/05/2024 and is subject to change at any time without notice. In the context of constantly changing technology, our customers are responsible, prior to any use, for checking with us that this document is the version in force.

We care / We act Our Commitments for a Sustainable future


CARBON FOOTPRINT*
-20 % kg
CO₂ equivalent/m²
between 2020 and 2025


BIO-SOURCED CONTENT**
10 % by 2025


RECYCLED CONTENT
30 % by 2025


ADHESIVE FREE***
35 % by 2025


ANNUAL VOLUME RECYCLED
60 000 t by 2025

Gerflor[®]

* Scopes 1 and 2 defined in the GHG protocol ** % of activity with biosourced materials *** % of activity - adhesive free solution